



Project	
Nomenclature	
Type	Date
Approval	
Notes	

The BLHV is a superior-grade, high bay vapour-proof LED fixture. The BLHV is ideal for indoor or outdoor use where there is a high probability of exposure to dust, water or vapour. Its unique, IP67 certified body makes it ideal in environments where vapour-proof efficiency and performance are a factor.

## Luminaire Summary

### Features

- Operating temperature ranges available from -40C to 40C
- L70 of 105,000+ hours, L90 of 34,000+ hours
- Standard 0 - 10V dimming
- Available in 2700K, 3000K, 3500K, 4000K, 5000K and 6500K
- Lumen packages are available ranging from 2' 10L (10000lm) to 4' 44L (44000lm)

### Approvals

- ETL certified to UL Canada and United States standards
- Made with UL Listed components
- Wet Location Rated
- DLC Listed
- NEMA4X Rated
- IP67 Rated
- NSF Rated

### Mounting

- Hooks provided for suspension mounting
- Surface-mount brackets available
- Pendant-mounting available

### Construction

- Manufactured in Ontario, Canada
- Fibreglass enclosure with neoprene gasket ensures a dust and water-resistant seal
- Stainless steel latches and clips

### Electrical

- Available in 120-277V, 347V and 480V

### Options

- IP66 Rated Motion Sensor Available
- 90 and 95+ CRI Options Available
- -40C Option Available

## Ordering Information

Fill in the fields below with your product selections. If you need help with this section, [contact your local sales professional](#).



1	2	3	4	5
BLHV				

Series	Lumen Output				CRI	Colour Temp	Voltage
BLHV	2' 10L	10,000lm	4' 20L	20,000lm	8 - 80 CRI	27 - 2700K	UNV - 120-277V
	2' 12L	12,000lm	4' 24L	24,000lm	9 - 90 CRI	30 - 3000K	347 - 347V
	2' 14L	14,000lm	4' 28L	28,000lm	1 - 95+ CRI	35 - 3500K	480 - 480V
	2' 16L	16,000lm	4' 32L	32,000lm		40 - 4000K	
	2' 18L	18,000lm	4' 36L	36,000lm	50 - 5000K		
	2' 20L	20,000lm	4' 40L	40,000lm	65 - 6500K		
	2' 22L	22,000lm	4' 44L	44,000lm			

6				
---	--	--	--	--

## Options

### Lenses

L26	Clear Polycarbonate Lens
L49	Frosted Acrylic Lens
L55	Clear Acrylic Lens
L59	Frosted Polycarbonate Lens

### Cords

W1xx	White 16/4 (Specify Length)
W2xx	Black 16/4 (Specify Length)
W3xx	White 16/3 (Specify Length)
W4xx	Black 16/3 (Specify Length)
W***	Other Options Available*

Key.	Cord Length.	Key	Cord Length
6	6FT	15	15FT
10	10FT	20	20FT

Ex. W406 would be 16/3 Black, 6FT

### Controls

WC19*	Avi-on Wireless Controls
WC**	Other Options Available*

### Motion Sensors

W30XXX	IP-Rated Motion Sensor (SBOR)
WX16	Internal Dimming Low Voltage Microwave Sensor
W**	Other Options Available*

### Dimming

B11	0-10V Dimming Leads
B12	Line Voltage Dimming
B27	Dim-to-off Driver
B**	Other Options Available*

### Emergency Driver

B17	UL924 10W Battery Back-up
-----	---------------------------

### Temperature Rating

BLANK	Standard
T0	-40C Cold Rated Components

### Packaging

BLANK	Individually Boxed on Pallets
P0	Bulk Packaging
P**	Other Options Available*

### Fasteners

BLANK	Stainless Steel Latches and Clips
-------	-----------------------------------

### Tamper Resistance

H9	Tamper Resistant Screws (Requires H4 Stainless Steel Latches)
----	---

### Mounting

M2xx	V-Hanger with Aircraft Loop Cables
M3xx	Y-Toggle Aircraft Cables
M14	Heavy Duty Surface Mount Brackets
M20	Ceiling-Mount V-Hooks
M24	Single Pendant Mount(3/4 Hub)

Key.	Aircraft Length.	Key	Aircraft Length
5	5FT	15	15FT
10	10FT	20	20FT

Ex. M305 would be Y-Toggle, 5FT

### Warranty

CL7	10-Year Comprehensive Warranty Upgrade
-----	--

## Documentation and Resources

All files and resources are available on our website for download. Files and resources are also embedded as links in this document, listed below. Additional files may be available upon request. Please contact your local sales agent [here](#) or contact [sales@bjtake.com](mailto:sales@bjtake.com) for more information.

- BLHV - Installation Instructions
- BLHV-2FT-10L-840-L49
- BLHV-2FT-12L-840-L49
- BLHV-2FT-14L-840-L49
- BLHV-2FT-16L-840-L49
- BLHV-2FT-18L-840-L49
- BLHV-2FT-20L-840-L49
- BLHV-2FT-22L-840-L49
- BLHV-4FT-20L-840-L49
- BLHV-4FT-24L-840-L49
- BLHV-4FT-28L-840-L49
- BLHV-4FT-32L-840-L49
- BLHV-4FT-36L-840-L49
- BLHV-4FT-40L-840-L49
- BLHV-4FT-44L-840-L49

## Certifications and Listings

Certifications that apply to this fixture and its possible configurations are listed here. More information available upon request.

Icon	Description
	DLC Listed
	ETL Listed
	NEMA4X Rated
	IP67 Rated
	NSF Rated
	90 and 95+ CRI Options Available

## Usage Applications

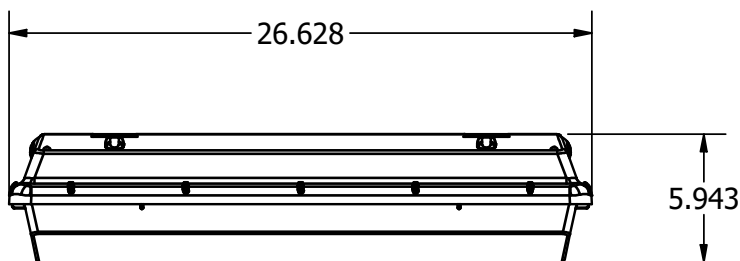
This fixture can be used in a variety of applications, and is ideal for the following:

Usage Application
Food Processing Plants
Manufacturing Facilities
Storage & Warehousing
Wash Bays And Wet Environments
Outdoor Parking Structures
Agricultural Barns

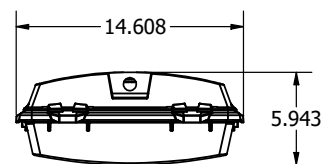
## Warranty Statement

BJ Take products are tested and/or inspected prior to being packaged for shipment and are guaranteed from the day the product is shipped for a period of ten-year LED chip warranty and a five-year comprehensive component warranty. This can be upgraded to a ten-year comprehensive warranty on request.

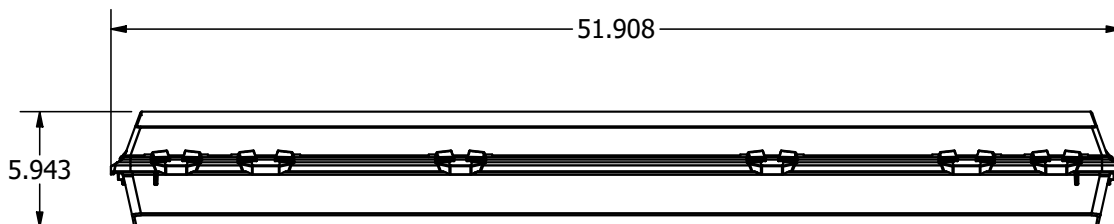
BLHV, 2 Foot, Side Dims



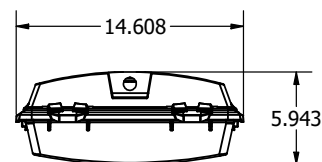
2FT End View



BLHV, 4 Foot, Side Dims



4FT End View



BLHV, 2 Foot, Wattage

Length	Size	Lumen Output	Fixture Wattage	Lumens per Watt
2'	10	9390	69.10	135.80
2'	12	11114	80.80	137.50
2'	14	12875	92.50	139.20
2'	16	14675	104.10	141.00
2'	18	17110	122.90	139.20
2'	20	18981	139.30	136.30
2'	22	20753	155.80	133.20

BLHV, 4 Foot, Wattage

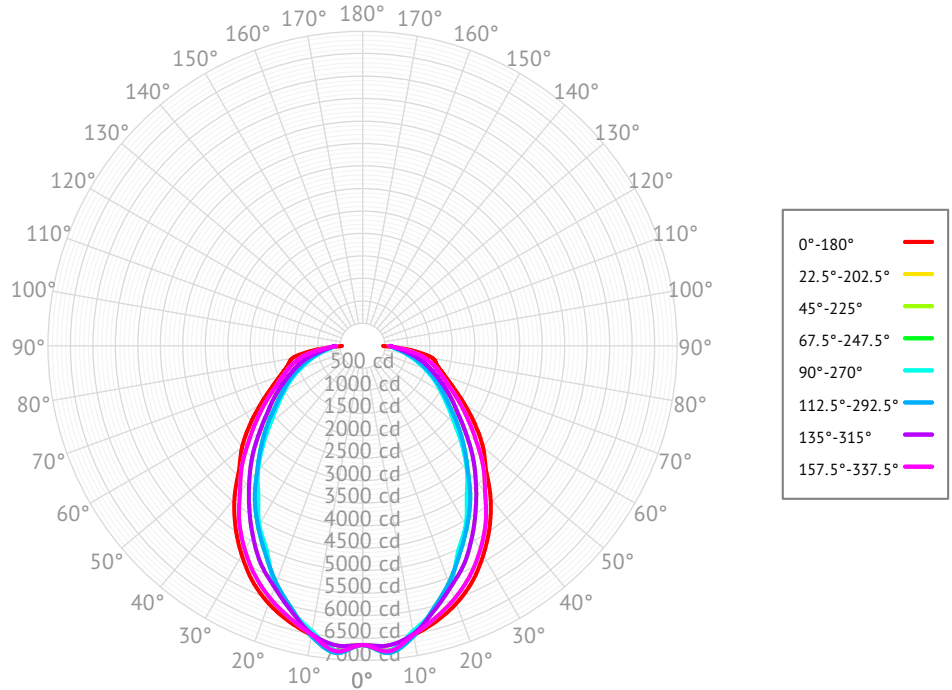
Length	Size	Lumen Output	Fixture Wattage	Lumens per Watt
4'	20	19346	136.20	142.00
4'	24	22898	159.20	143.80
4'	28	26527	182.10	145.70
4'	32	30236	205.10	147.40
4'	36	35250	242.00	145.70
4'	40	39106	274.40	142.50
4'	44	42755	306.80	139.40

- \* Drawings aren't to scale
- \* Standard tolerances apply
- \* Specifications may change without notice

## BLHV-2FT-18L-840-L49

### Cone of Light

Mtg Height	Light Level	Beam Diameter
6.0 ft	184.9 fc	14.7 ft
8.0 ft	104.0 fc	19.6 ft
10.0 ft	66.6 fc	24.5 ft
12.0 ft	46.2 fc	29.4 ft
14.0 ft	34.0 fc	34.3 ft
16.0 ft	26.0 fc	39.2 ft

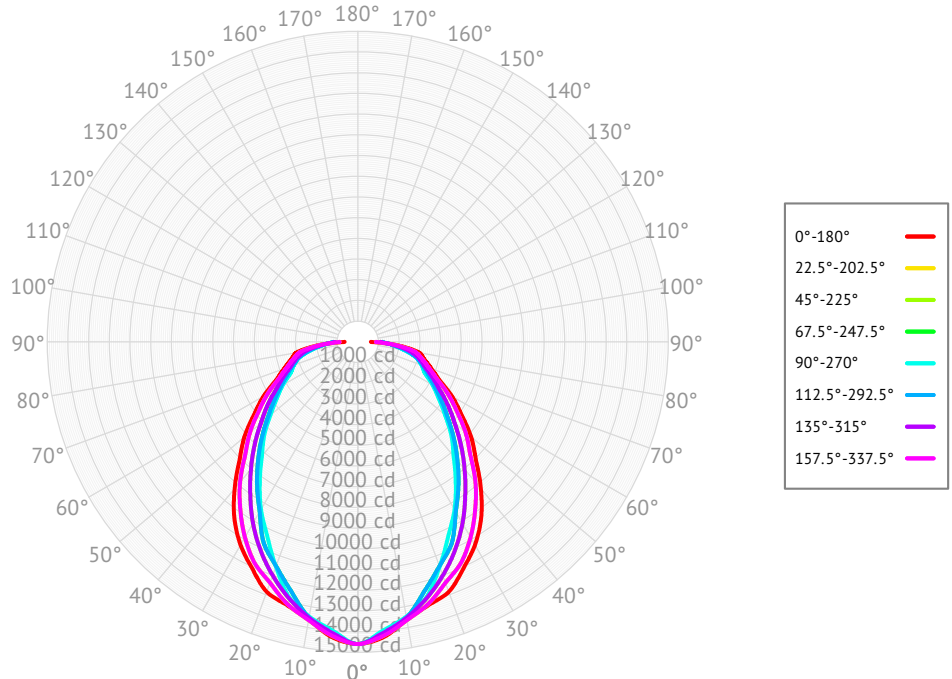


Based on 'BLHV-2FT-18L-840-L49', ie. (BLHV, 2 foot, 18000lm, 80 CRI, 4000K, w/ Frosted Acrylic Lens)

## BLHV-4FT-36L-840-L49

### Cone of Light

Mtg Height	Light Level	Beam Diameter
6.0 ft	405.5 fc	13.9 ft
8.0 ft	228.1 fc	18.5 ft
10.0 ft	146.0 fc	23.2 ft
12.0 ft	101.4 fc	27.8 ft
14.0 ft	74.5 fc	32.4 ft
16.0 ft	57.0 fc	37.0 ft

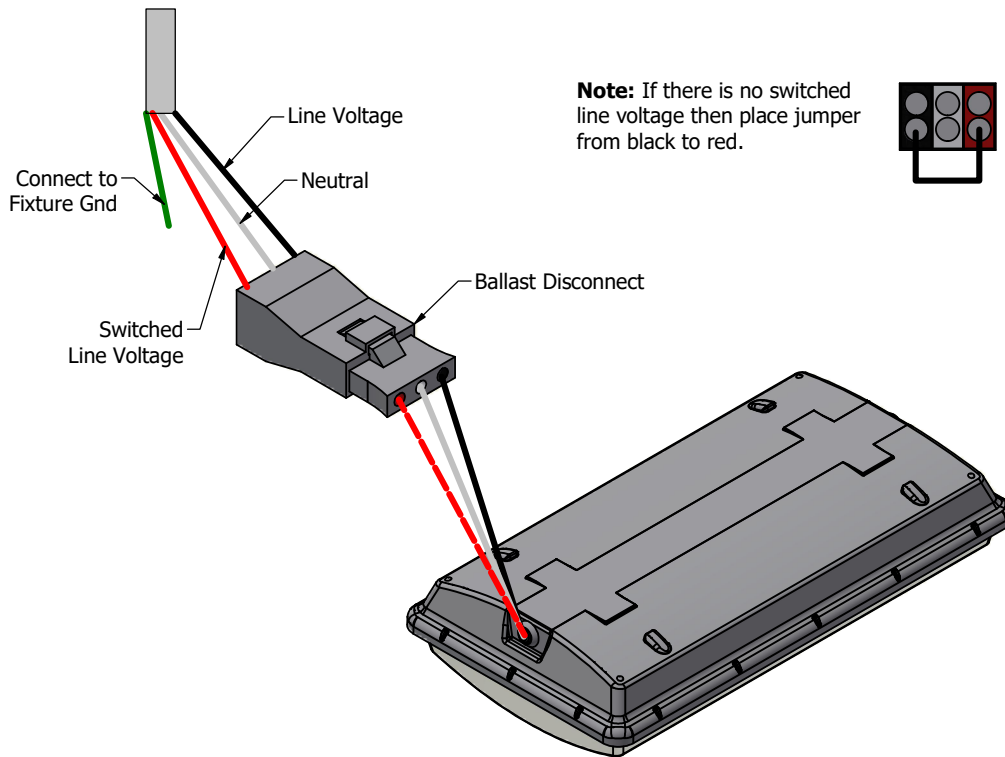


Based on 'BLHV-4FT-36L-840-L49', ie. (BLHV, 4 foot, 36000lm, 80 CRI, 4000K, w/ Frosted Acrylic Lens)

## Emergency Battery Plan - 20W

Emergency Lighting	Solution System Components	System Operation
Option Code 'B17' - UL 924 listed components that are factory installed in the luminaire	UL 924 listed 20-watt battery integral to the luminaire	Loss of normal power is detected by the B17 emergency light solution and the power supply is switched automatically to the 20-watt integral battery pack which powers the emergency LED lighting driver.
	UL 924 listed LED emergency lighting driver integral to the luminaire	The battery pack and emergency LED driver are UL 924 certified to provide a minimum of 90-minutes of emergency lighting.
	Wiring options for both switched and unswitched emergency lighting	

## Emergency Lighting Wiring



## Important Information

More information on emergency lighting options and configurations available on request.